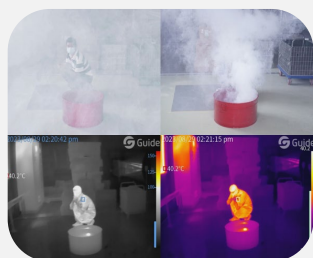


Thermal Imaging Pioneer: Engineered for Extreme Firegrounds

PR II Series Thermal Camera for Fire Service

PR II series dual-purpose thermal imaging camera for rescue and detection empowers a new perspective for firefighters. The product is certified as Intrinsic Safety Explosion-Proof. It combines high resolution, a large display screen, multiple scene modes, temperature analysis functions, and a strong protection rating, which can break through the limitations of harsh environments such as high temperatures, high humidity, and thick smoke in fire scenes to help firefighters see the surrounding environment quickly and clearly, locate the fire and search for trapped individuals more accurately, providing users with more efficient and safe fire visualization solutions.



See through smoke

Quickly generates clear thermal images without focusing, aiding navigation in smoke-filled environments.



Crisp and Smooth Imaging

Up to 640×480 IR resolution, 60Hz frame rate, paired with an anti-glare display for an exceptional visual experience.



High-Temperature Durability

Fully functional at 260°C for up to 5 minutes, IP67 waterproof and dustproof, and resistant to 2-meter drops.



Wide Temperature Range

Measures from -40°C to 2000°C (with aperture), supports temperature analysis and over-temperature alarms.



128GB Large Storage

Supports photo and video capture, lag-free shooting, with 128GB capacity for storing over 20,000 images.



Multi-Functional Components

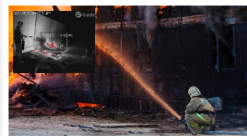
Dock for charging and data transfer; practical telescopic buckle and lanyard; optional digital camera module.

Applications



Fire Reconnaissance

Pinpoint fire locations and spread direction using real-time thermal imaging, aiding rapid detection and operational planning.



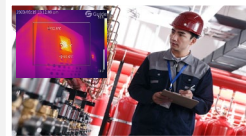
Aiding Firefighting

Identify high-temperature objects, smoke buildup, and combustion sources for timely, accurate fire suppression and improved efficiency.



Search and Rescue

Quickly locate trapped individuals in dark, smoky environments, saving critical time for rescue operations.



Fire Inspection

Display real-time temperature distribution, analyze data, and store images to assist fire supervisors in inspections and accident prevention.

Standard Package



Device (with lens cover)



Aperture



Lithium-ion battery (3 pcs)



Desktop charger



Power adapter with plugs



USB-A to USB-C Cable



USB-C to USB-C Cable



Micro HDMI to HDMI Cable



Hand strap



Neck strap



Telescopic buckle



Lanyard



Carrying bag



Safety box

- Quick Start Guide
- Warranty card
- Inspection report
- Calibration certificate

Optional Accessories



Digital camera module



Lithium-ion battery



Tripod

Software



PC Software – ThermoTools

(Windows)

- Multiple image/video import methods: SD card, FTP, USB, cloud file
- Infrared Image Analysis: Supports DIY analysis areas and batch processing.
- Video Analysis: Frame-by-frame analysis, dynamically displays temperature changes.
- Report Generation: Multiple report templates with customizable layouts and one-click export.



Mobile App – FocusIR

(iOS/Android)

- Real-time Preview: Real-time video streaming, instant preview on mobile phone.
- Remote Control: Sending control commands, such as focusing, recording photos/videos.
- Image Editing: Supports editing analysis objects, modifying information, and adding notes.
- Report Generation: Supports generating PDF reports, with options for emailing, sharing, and printing.

Specifications

Product model	PR410	PR610
Infrared resolution	384×288@12μm	640×480@12μm
Frame rate	60Hz/9Hz	
Field of view	50°×37°	
Focusing mode	Focus-free	
Measurement range	Support auto-switching: -40°C to 150°C, 0°C to 650°C, Optional 500°C to 2000°C (Aperture is required)	
Measurement accuracy	±2°C or ±2%, whichever is greater	
Display screen	4.3" LCD, 800×480 Pixel	
Function	Photography and video recording, OTA update	
Storage media	Local storage (128 GB)	
External interface	USB-C, Micro HDMI, Tripod socket	
WIFI	Yes, it can be connected to the mobile terminal for image and real-time video transmission	
Battery type	Lithium-ion rechargeable battery	
Operating time	≥4 hours	
Working temperature	General Working temperature range: -10°C to +50°C; Specific Working temperature ranges: 80°C: 30 minutes, 120°C: 10 minutes, 260°C: 5 minutes	
Weight	≤1.3kg (with battery)	
Size	296×122×153mm	