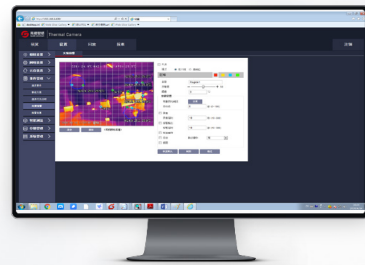


# MC200

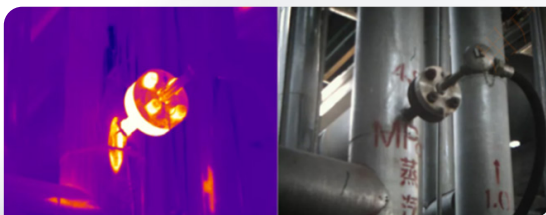
Thermal & Optical Bi-Spectrum  
Network Turret Camera

Mini size, Wide view



## Introduction

Equipped with the self-developed 256x192 IR detector, MC200 provides both thermal and visible-light imaging. Its palm-sized body allows itself to be easily installed on walls, ceilings or somewhere that is hard to reach, like distribution cabinets, to monitor critical equipment. Clear imaging, accurate temperature measurement and rapid positioning of equipment can help field personnel quickly identify thermal hazards and assist them in decision-making to ensure equipment safety.



## Features and Benefits

- o Clear thermal imaging supported by 256x192 uncooled VOx detector
- o 5 MP visible light by 1/2.7-inch CMOS sensor
- o 56°(H) x 42°(V) FOV
- o IP67 rating enclosure that can be installed in harsh
- o ONVIF and other network protocols
- o Temperature measurement alarm through warning lights and horn
- o WEB control for real-time preview, alarm, playback, statistical reports and others

## Applications

Suitable for temperature measurement at close range, such as data room, production workshop, logistics warehouse, wind turbine, charging pile, etc.

## Specifications

Product model	MC200
<b>Thermographic</b>	
Detector type	WLP VOx
Detector resolution	256×192
Pixel size	12μm
Wavelength range	8μm to 14μm
NETD	≤45mK@30°C
Lens	3.2mm, 56°×42°
Focusing mode	Focus-free
Pseudo colors	9 pseudo colors: White Hot, Black Hot, Rainbow and so on
Featured features	Detail enhancement, 2D/ 3D noise reduction, Image flip, Dual light fusion
<b>Temperature measurement</b>	
Measurement range	Low: -20°C to 150°C; High: 100°C to 550°C
Measurement accuracy	±2°C or ±2% (whichever is greater)
Target setting	Up to 21 targets: 6 spots/ rectangles, 3 polygons (calibrated 7-point polygon)/ circles/ lines
Measurement function	Cold/ hot spot tracking, Full-screen point temperature measuring, Query and export of information
<b>Visible light</b>	
Sensor type	1/ 2.7"CMOS
Max. resolution	2592×1944
Min. illuminance	Color: 0.05lux; B/W: 0.005lux, 0Lux(Infrared light ON)
lens	2.8mm; 65°×49°
Fill light	Infrared fill light + White light
Featured features	Visible light gain control, 2D/ 3D noise reduction, Backlight compensation, Wide dynamic, Strong-light photoinhibition, Image flip, Exposure compensation
<b>Image</b>	
Video compression	Switch between three standards H.265, H.264 and MJPEG
Image format	JPEG
Code stream	Visible light: Mainstream (2592×1944/2304×1296/1920×1080/1280×720/D1, default 2592×1944), Substream (1280×720/D1, default 1280×720); Thermal imaging: Mainstream (512×384), Substream (256×192)
<b>Protocol and storage</b>	
Network protocol	IPv4/ IPv6, HTTP, SMTP, RTSP, TCP, DHCP, ONVIF (Automatic search device, RTSP video stream and device control), GB/ T28181, MQTT
SDK/ API	Open SDK/ API for software integration
Local storage	256G TF card
<b>System function</b>	
Language version	Chinese/ English
Browser	Supported
User management	Max. 10 users with two levels of user accounts (Admin and User)
Fault detection	Network interrupt detection; IP conflict detection; Illegal access; storage exception
Intelligent functions	Sound and Light Alarm
<b>Hardware interface</b>	
Power interface	DC12V±20%/POE
Network interface	One 10M/ 100M Ethernet port, POE (802.3 at)
Alarm interface	1 input and 1 output
Other interfaces	1-channel RS485, audio 1 in 1 out
<b>Environmental</b>	
Working temperature	-20°C to +60°C
Working humidity	≤95%, non-condensing
Encapsulation	IP67, surge protection (2KV) and static protection(4KVcontact/8KVair)
<b>Physical</b>	
Power consumption	≤6W
Size	≤112mm×112mm×100mm
Net weight	≤0.7kg
Installation mode	Top mounting/hoisting mounting/wall mounting

