

TD631 LRF

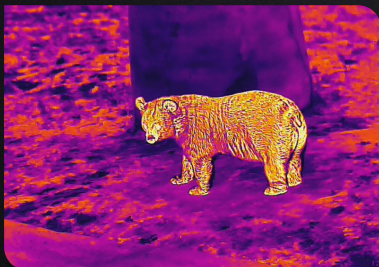
Handheld Thermal Imaging Monocular

640, Thermal Wise, Price Nice



Introduction

The TD Gen2 Series laser rangefinder version is the industry's first entry-level full-featured handheld thermal imaging monoculars. While inheriting the characteristics of the previous generation, such as being lightweight, portable, easy to operate, and durable, TD631 LRF integrates a high-precision laser rangefinder module to accurately detect targets within 600 meters. It adopts an AMOLED display, providing clear imaging and a comfortable viewing experience, making it the ideal equipment for outdoor night vision.



Features and Benefits

- Boot up in 2 seconds and ready to use
- High-brightness AMOLED display for a comfortable observation
- Upgraded image algorithm for richer details
- Built-in laser rangefinder for 600m accurate target detection
- Super long battery life of up to 8 hours
- IP66 encapsulation, rugged and durable
- New UI and interaction design for easier operation
- OTA firmware upgrade by connecting APP

Applications

- Outdoor
- Wild Adventure
- Law Enforcement
- Search & Rescue
- Personal Security
- Livestock Breeding

Specifications

Product model	TD631 LRF
Sensor	
Type	Uncooled VOx Infrared Detector, 8 to 14 μ m
Resolution	640 \times 480, 12 μ m
NETD	\leq 35mK
Frame rate	50 Hz
Lens	
Focal length	35 mm; F1.0
Field of view	12.5° \times 9.4°
Optical zoom	1.7x
Digital zoom	1x, 2x, 4x and 8x
Focus	Manual
Display	
Display type	0.23" AMOLED
Resolution	640 \times 400
Eyepiece	Exit pupil distance \geq 12 mm; Diopter: -4 to +2; Zoom: 18x
Video output	Analog video
Range Performance	
Detection range	1400 m
Hardware	
Laser rangefinder	Max. measuring range: 600m
Functions	
Scene modes	Enhanced, Highlight and Natural
Color palettes	Black Hot, White Hot, Red Hot, Iron Hot, Blue Hot
WIFI	2.4 G
Supported Application	TargetIR
Firmware OTA	Upgrade device firmware via app connection
Others	PIP, Hot spot tracking
Power	
Battery type	Single, replaceable 18650 battery
Operating time	\geq 8 hours
Interface	
USB	USB Type-C
Mechanical interface	UNC 1/4"-20 (Tripod mounting), Mechanical expansion interface
Environmental	
Storage temperature	-30 °C to 60 °C
Humidity	10 % to 95 % non-condensing
Shock	30 G at 11 ms half sine pulse (as per IEC60068-2-27)
Drop	1 m
Encapsulation	IP66
Certification	IP66, FCC, CE, RoHS, EAC, WEEE, un38.3, IEC 60825-1 Class 2
Physical	
Weight	\leq 399 g
Size	153 \times 77 \times 74 mm
Standard	A device, lens cover and lanyard, Battery charger, single 18650 battery, USB Type-C cable, Wrist strap, Carry bag, Eye mask, Quick use guide, Warranty card