



MobIR

THERMAL IMAGING CAMERA

Use Manual

Thank you for choosing this product. Please read this Guide before use and properly keep it for future reference. We hope that the product meets your expectations.

CONTENTS

Precautions	1
Camera	2
Connection	2
Version.....	2
Routine temperature measurement	2
Main interface of human body temperature measurement.....	4
Main interface of night vision mode	5
Focusing	6
Brightness/Contrast.....	6
Shutter compensation	6
Add analysis object	7
Color	8
Photo/Video switch	9
Photo/Video starting/ending	10
Turn on PIP	10
Detail enhancement	11
Album	13
Cloud album.....	13
Local album.....	15
Picture/Video details	15
Select/Cancel	17
Color adjustment	17
Add/change or delete analysis object	19
Turn on visible light	20
Share	20
Delete photos	21
Mine.....	22
Mine.....	22

Personal information	22
Settings	23
Emissivity	23
Temperature unit	24
Temperature alarm	24
Isotherm color	25
Language settings	26
About	27
Restore factory settings.....	27

Precautions

1. Do not use soluble or similar liquids on the device, which may cause damage to the device.
2. When using the device, please try to keep it stable and avoid violent shaking.
3. The device may click occasionally during use, which is normal since it is turning on shutter correction.
4. The normal working temperature of the device is 0°C~45°C; the optimum working temperature is 16°C~22°C; the storage temperature is -10°C~55°C; the relative humidity ranges from 5% to 95% in non-condensing state.
5. Do not disassemble the product violently to avoid irreversible damage.
6. Avoid hard objects from touching the lens, which may cause damage to the lens.
7. Please do not expose the lens to high intensity energy sources (including the sun, the laser transmitting devices and their reflection sources), which may affect the temperature measurement accuracy of the product and possibly or permanently damage its infrared detector.
8. Please place the product into the carrying case when not in use.

Camera

Connection

The APP will be started automatically when the user insert the product into the port of a mobile phone. The screen displays the following if no device is detected or the OTG of the mobile phone is not turned on:

You can go to "Album" and "My" pages when no device is detected.

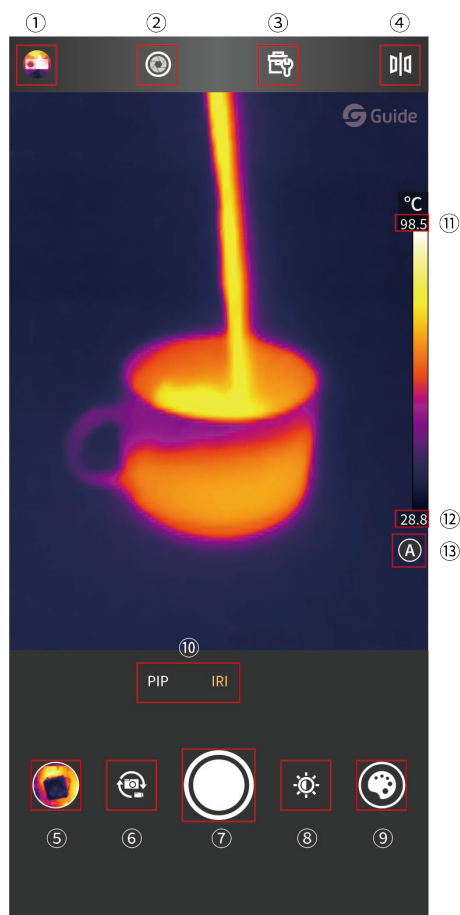


Version

MobIR APP supports all Guides mobile phone accessories of MobIR series. The interface varies with the devices inserted by users. Currently, the APP supports three different modes: routine temperature measurement, human body temperature measurement and night vision.

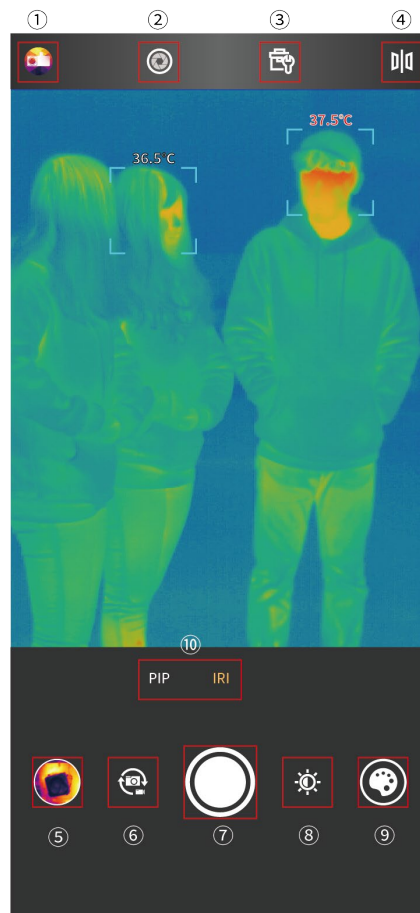
Routine temperature measurement

The main interface includes 14 parts as shown in the figure below.



- | | |
|--------------------------------------|-----------------------------|
| 1. My | 8. Brightness/Contrast |
| 2. Shutter compensation | 9. Color switching |
| 3. Toolkit | 10. Shooting mode |
| 4. Image mirroring | 11. Upper temperature limit |
| 5. Index (view recent photos/videos) | 12. Lower temperature limit |
| 6. Photo/Video switching | 13. Auto/Manual dimming |
| 7. Photo/Video | |

Main interface of human body temperature measurement



- | | |
|--------------------------------------|------------------------|
| 1. My | 6. Photo/Video switch |
| 2. Shutter compensation | 7. Photo/Video |
| 3. Toolkit | 8. Brightness/Contrast |
| 4. Image mirroring | 9. Color |
| 5. Index (view recent photos/videos) | 10. Shooting mode |

Main interface of night vision mode



- | | |
|--------------------------------------|------------------------|
| 1. My | 7. Photo/Video |
| 2. Shutter compensation | 8. Brightness/Contrast |
| 3. Toolkit | 9. Color |
| 4. Image mirroring | 10. Shooting mode |
| 5. Index (view recent photos/videos) | 11. Photo/Video switch |
| 6. Image mode switch | |

Focusing

When no analysis object or pop-up menu is displayed on the main screen, tap the screen to trigger Auto Focus, accompanied by "beeps" until the picture sharpens.


If the picture is still not clear after Auto Focus is completed, you can focus manually. There are two forms of manual focus:

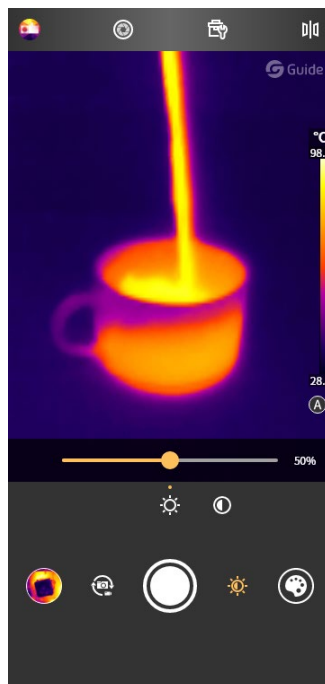
Manual focus can be performed by using the phone volume +/- key, with "+" for far focus and "-" for near focus;

Another method is to conduct interactive operations on the screen. The specific operations are as follows: After triggering Auto Focus in the real-time video interface and before the focusing symbol disappears, swipe up and down the screen to trigger Manual Focus and a vertical scale (upward: far focus, downward: near focus) will appear to the left of the focusing symbol.


Users do not have to slide on the scale to perform manual focus operations. Any sliding up and down in the real-time screen without buttons or controls is effective.

Brightness/Contrast


Click  in the main interface to adjust brightness and contrast from 0 to 100%.



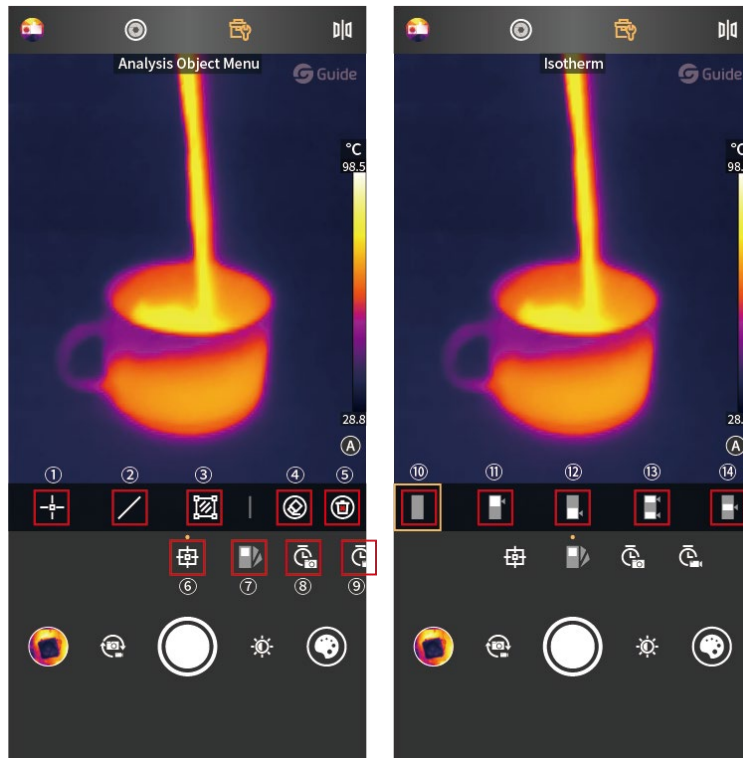
Shutter compensation

Click  for manual shutter compensation.

Add analysis object

Click  to go to the “Add analysis object” interface as shown in the figure below.

Point/Line/Area analysis object can be added. Three points, one line and two areas can be added at the same time.




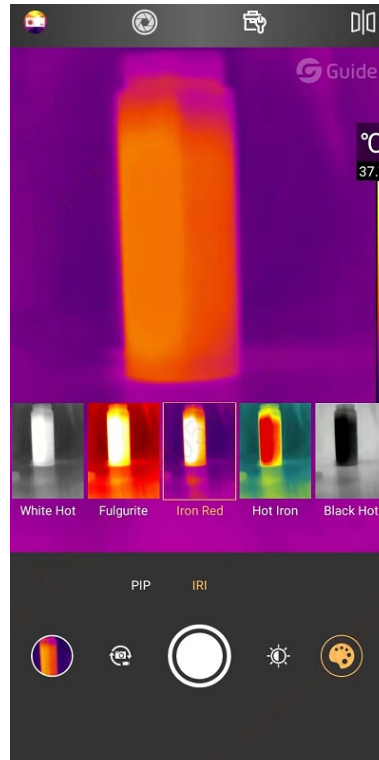
- | | |
|--|-------------------------------|
| 1. Add point temperature measurement | 8. Time-lapse shooting |
| 2. Add line temperature measurement | 9. Time-lapse video recording |
| 3. Add area temperature measurement | 10. Disable isotherm |
| 4. Delete the selected analysis object | 11. Upper isotherm |
| 5. Remove all analysis objects | 12. Lower isotherm |
| 6. Add analysis object | 13. Isotherms on two ends |
| 7. Isotherm | 14. Isotherm within the range |

A maximum of 3 points, 1 line and 2 areas can be added.

In isotherm mode, the detail enhancement adjustment can only be performed automatically.

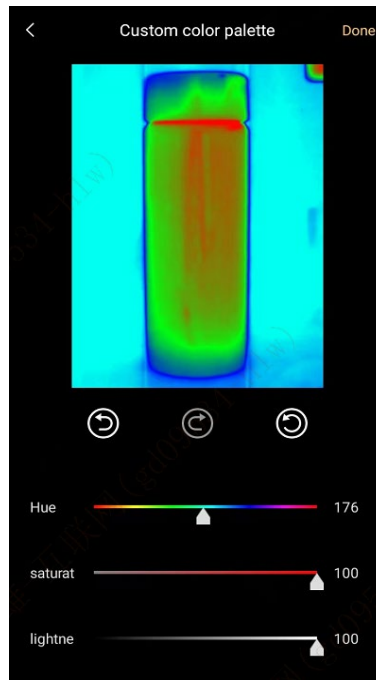
Color

In the main interface, click  to open the color selection interface, as shown in the figure below. The APP provides 9 different modes of pseudo color for users to switch based on the scenes or preferences.




Colors can be customized.

Drag the sliders at the bottom to change the color, and then click "Done" at the upper right corner to save the customized infrared image.



Photo/Video switch

Click  in routine temperature measurement and human body temperature measurement mode to switch between photo/video taking.

Click/Slide the Photo/Video text at the bottom in night vision mode to switch between photo/video taking.



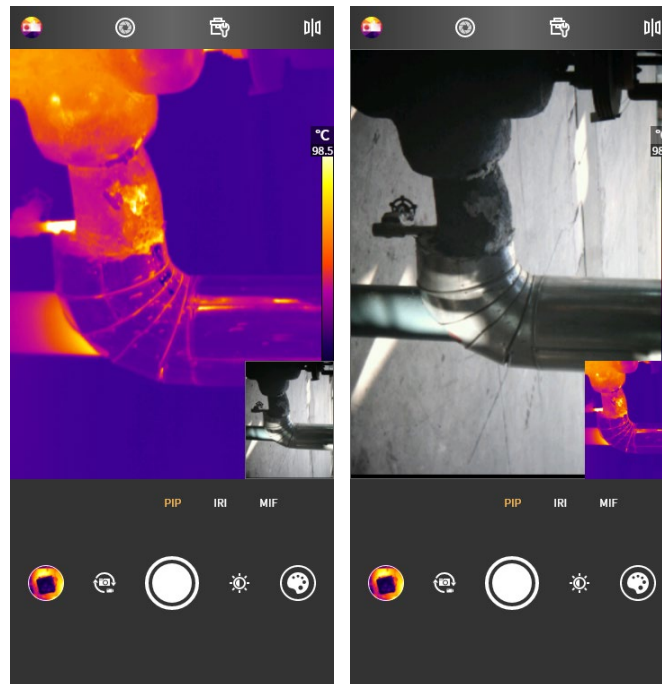
Photo/Video starting/ending

Click Video button to start video recording, and the recording time is displayed at the top.

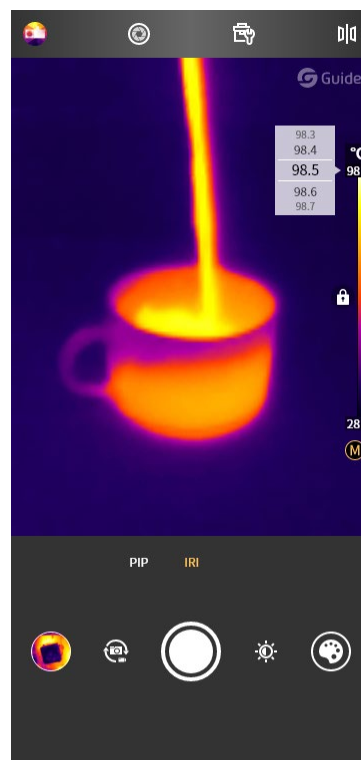




Turn on PIP

Slide/Click the shooting mode to PIP, and the APP will turn on the mobile phone camera on the same side as MobIR and display the image in a little window in PIP. Click any point in the little window to switch the visible light and infrared light display frames, and click the little window again to return to the state when the PIP is just turned on.



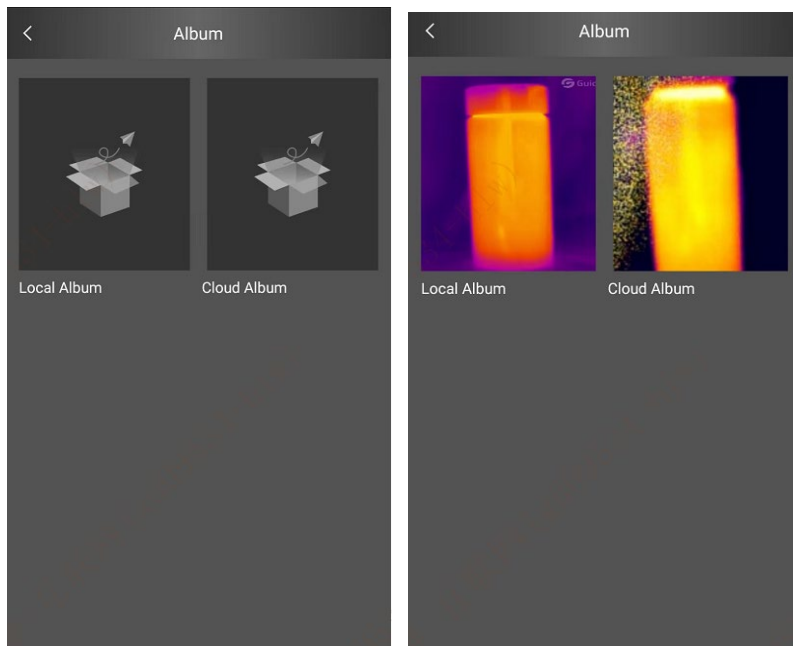
Detail enhancement



Detail enhancement can be adjusted manually and automatically. Automatic mode is displayed as  and manual mode is displayed as . In automatic mode, the temperature distribution sliders cannot be adjusted. In manual mode, ②lower temperature limit and ③upper temperature limit can be adjusted manually within the temperature measurement range.

Album

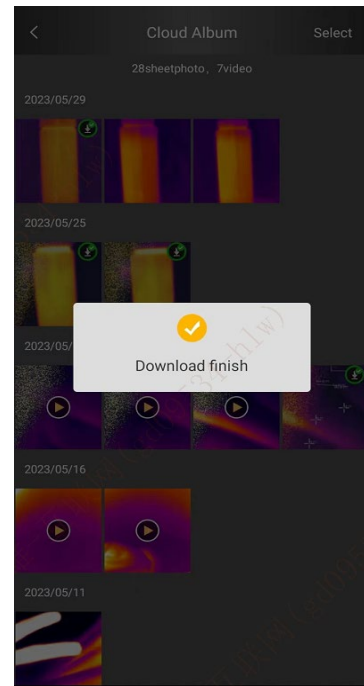
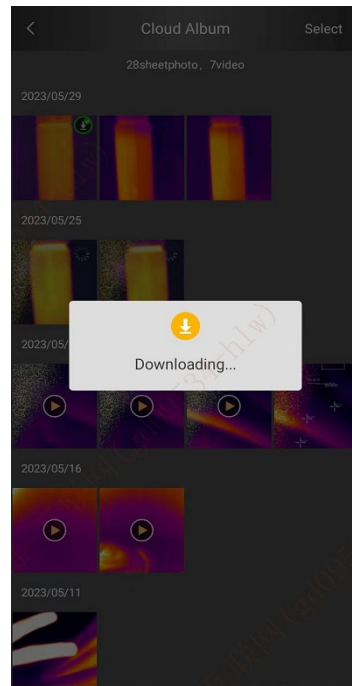
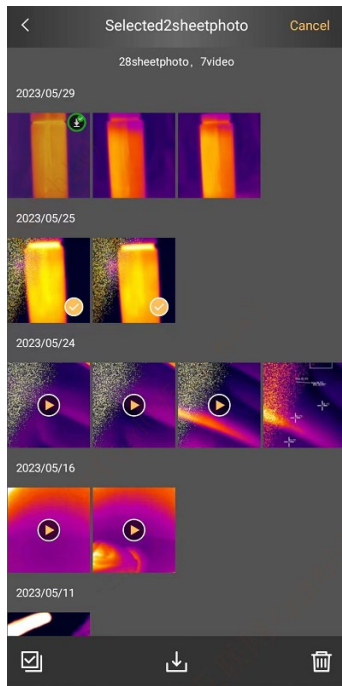
There are local albums and cloud albums. Cloud albums will be displayed after the user logs in. If the user is not logged in, click "Cloud Album" to go to the login page.



Cloud album

Click "Cloud Album" when the user is not logged in to go to the login page. Users not registered need to register before logging in.

Cloud album function can be used after logging in. Photos in the cloud album can be edited, viewed and deleted after being downloaded. The photos can be downloaded, previewed and deleted before downloading.




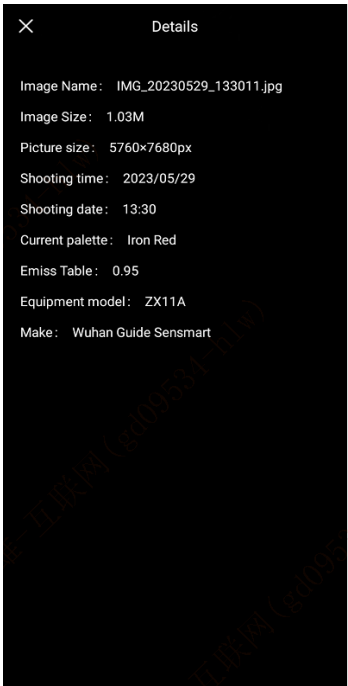
Local album

Users can view visible light/share/delete and edit pictures in the picture viewing interface.
Users can play/share and delete videos in the video viewing interface.



Picture/Video details

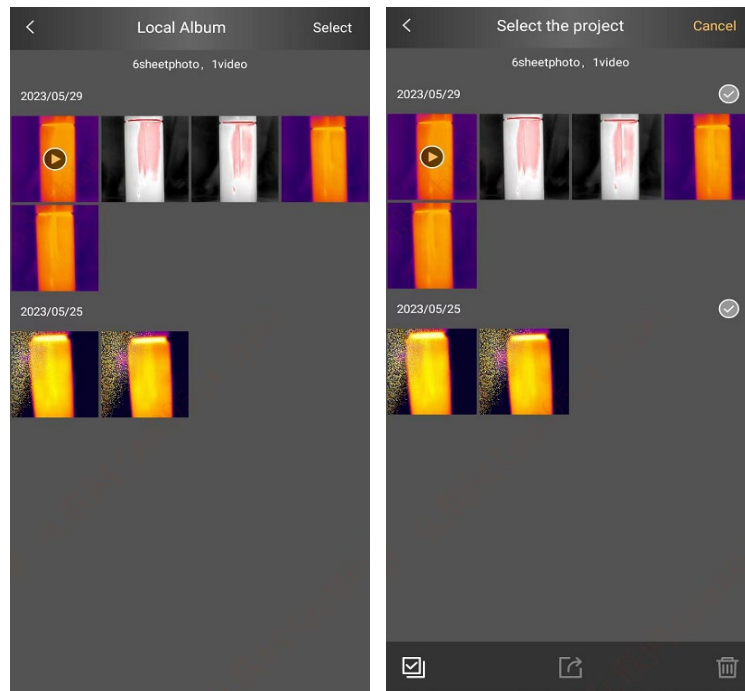
Click  to view the picture details, as shown in the figure below.




Select/Cancel

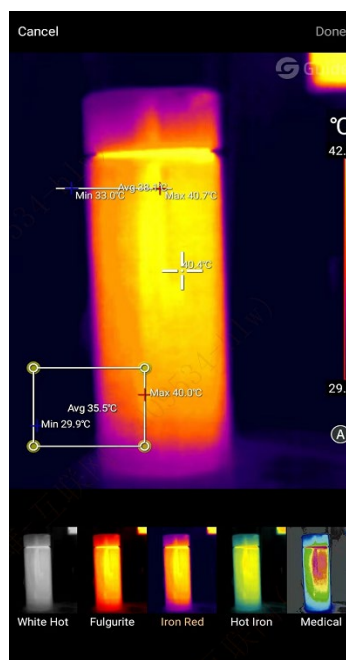
Click "Select" to go to the corresponding state, and click pictures or videos and the thumbnails will be checked, and click "Cancel" to uncheck them.

Users can select all/share/delete the checked pictures or videos. The icons are as follows: select all




Color adjustment

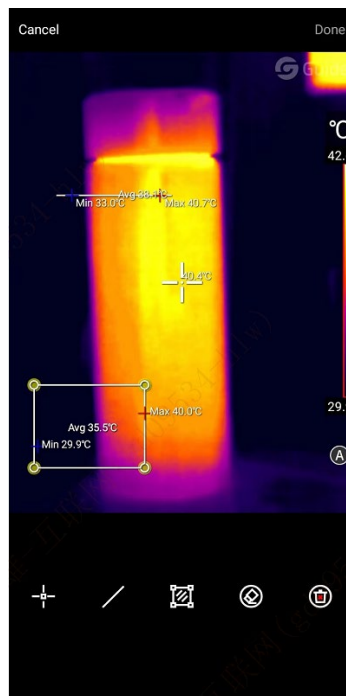
Click  to display the following interface:





Slide to adjust the color of the current picture. Customized color adjustment is supported.



Add/change or delete analysis object

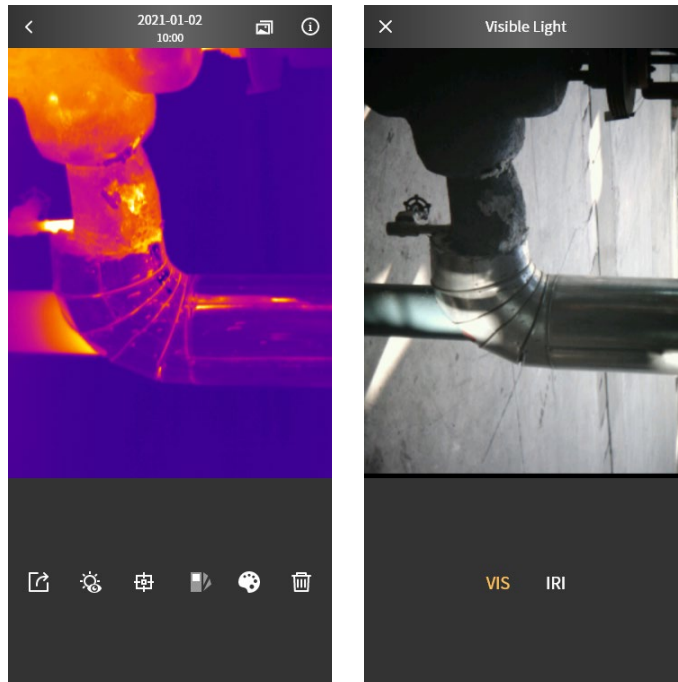
Click  to display the following interface, which is similar to the analysis object adding interface, and users can change/delete/add analysis objects;




Click  to switch the detail enhancement adjustment to manual mode, and the icon changes to . In automatic mode, the temperature distribution sliders cannot be adjusted. In manual mode, the lower temperature limit and upper temperature limit can be adjusted manually within the temperature measurement range.

Turn on visible light

Click  to display the visible light images and click  to return to the infrared image interface.



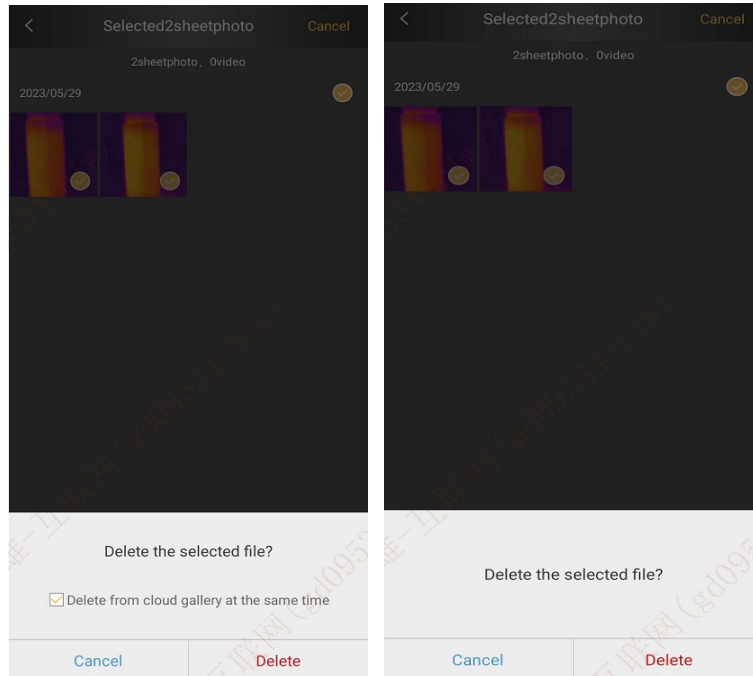
Share

Click  to share the current picture or video. The system sharing platform will be used to share pictures and videos to relevant social platforms installed in the user's mobile phone.

Delete photos

Select the pictures and click  to delete the pictures or videos.

The logged-in users, when deleting a picture from the local album, can select to delete it from the cloud album. When the user is not logged in, deleting a picture needs to be reconfirmed.

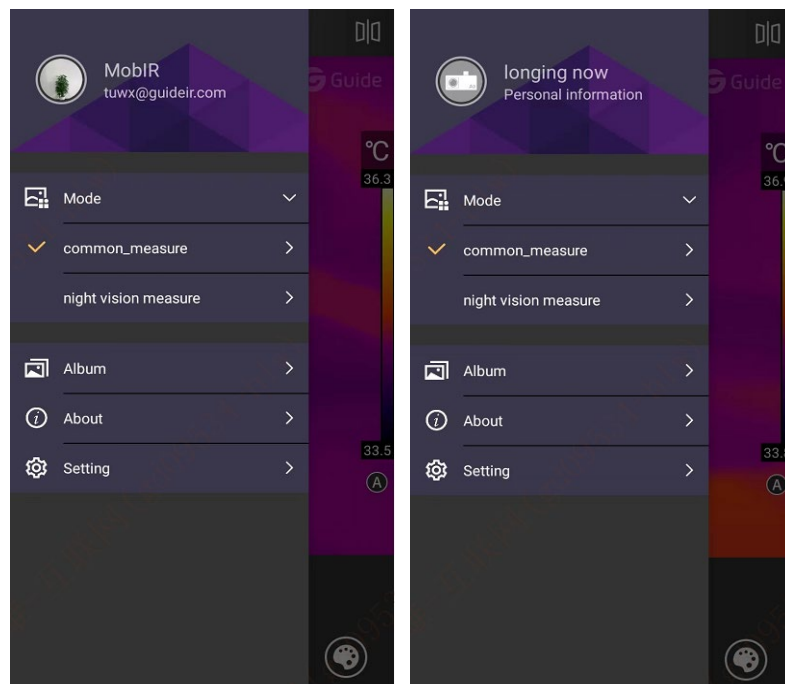


Mine

Mine

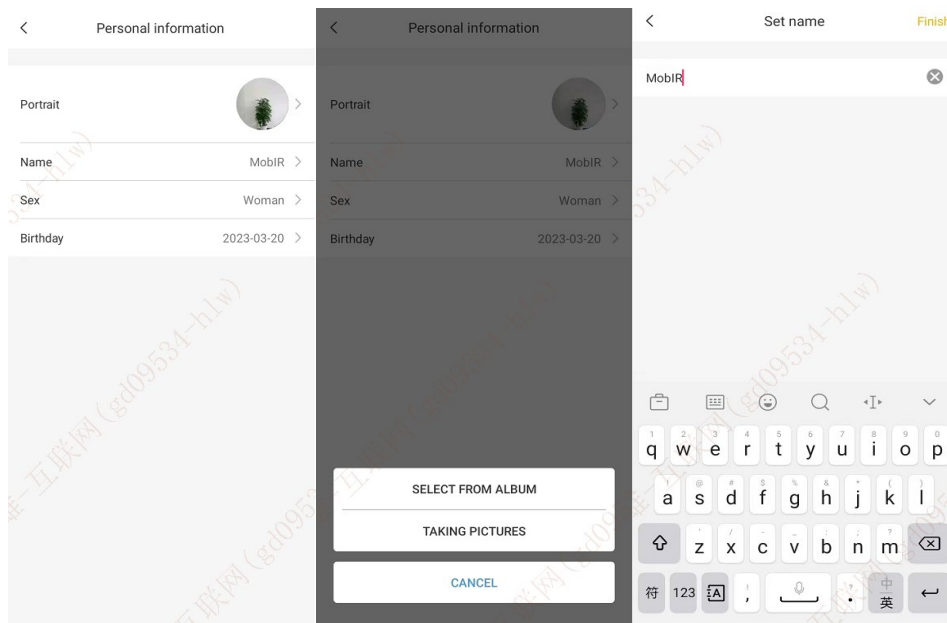
When a user has logged in, Personal information (profile+nickname+account), Album, Help, About and Settings will be displayed on the side bar.

When a user is not logged in, Log in (default profile+login entrance), Album, Help, About and Settings will be displayed on the side bar.



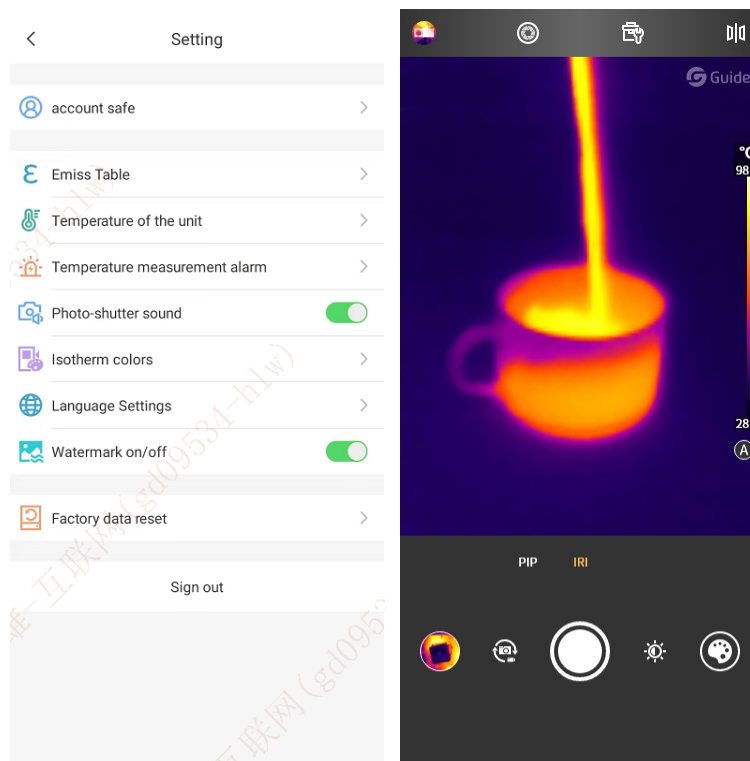
Personal information

After logging in, users can modify the personal information, including the profile, name, gender and birthday.



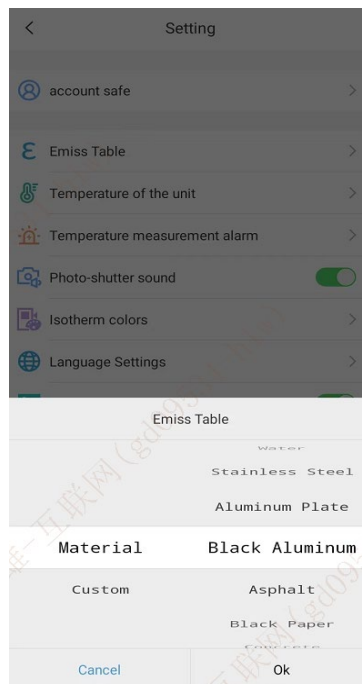
Settings

Watermark is turned on by default, and the infrared images taken at this time are watermarked, but the visible light images and infrared videos are not watermarked. If Watermark is turned off, the infrared images taken will not be watermarked.



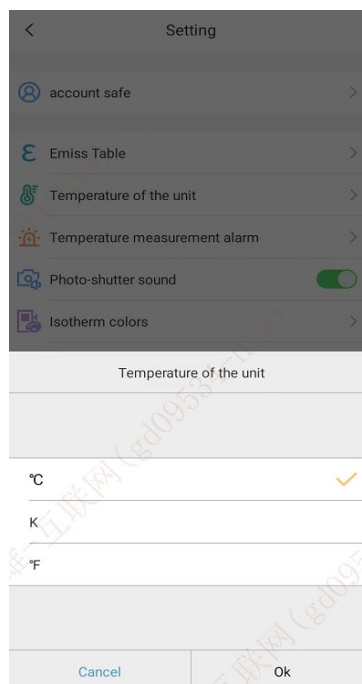
Emissivity

Temperature measurement parameters can be adjusted based on the objects measured by users to improve the temperature measurement accuracy.

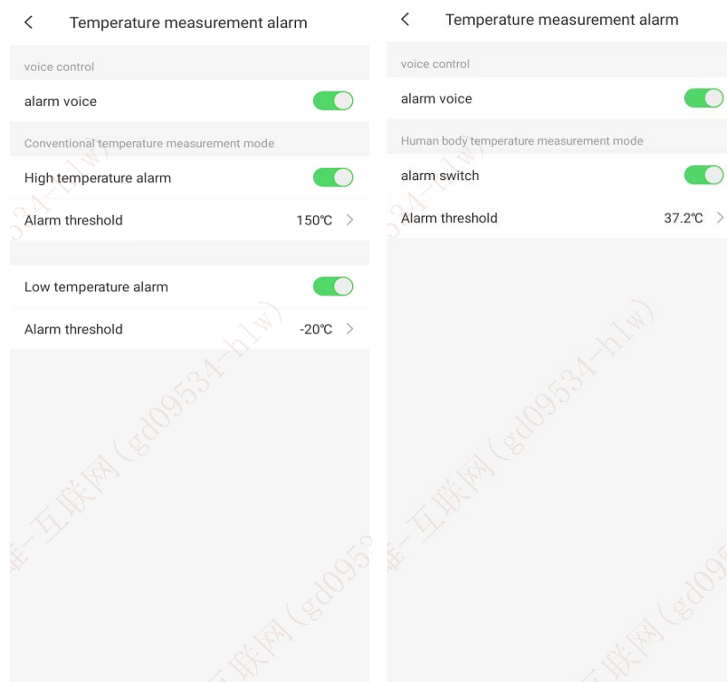


Temperature unit

The temperature is in centigrade by default. The device supports conversion between three units.



Temperature alarm

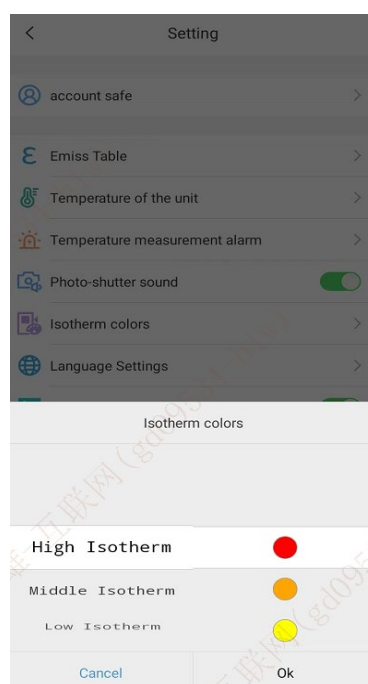


Temperature alarm includes three parts and the first is the alarm sound. If it is turned off, there will be no sound for the human body temperature measurement or routine temperature measurement alarm.

The alarm switch and alarm threshold value settings in human body temperature measurement mode are mainly for human body temperature measurement; likewise, the high and low temperature alarms in routine temperature measurement mode are for relevant functions.

Isotherm color

Users can customize the isotherm color.



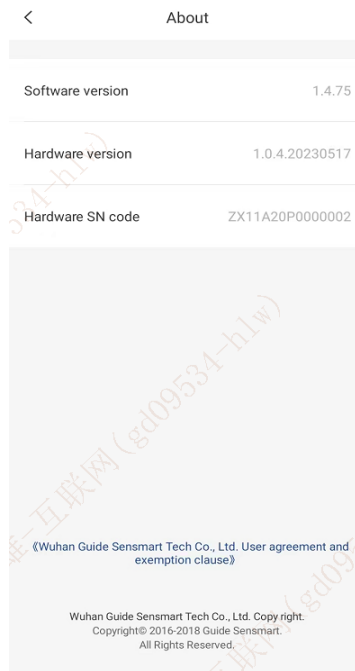
Language settings

Users can set the language as needed. Currently, the device supports Simplified Chinese/English. Later we will add more languages.



About

The version and user agreement of the APP are recorded here.



Restore factory settings

The APP settings can be restored to factory mode with one key.

